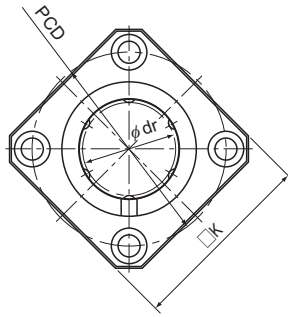
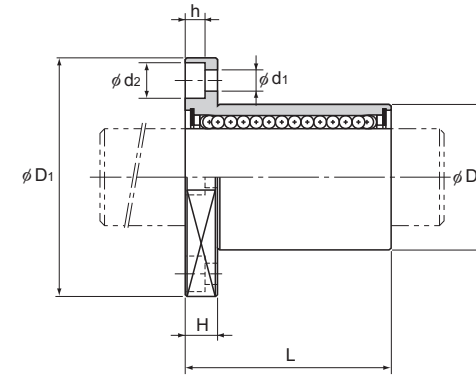


# Model LMK



Model LMK




Guide Ball Bushing/Linear Bushing

Unit: mm

Model No.	Ball rows	Main dimensions								Flange perpendicularity	Eccentricity (max)	Radial clearance tolerance	Basic load rating		Mass g				
		Inscribed bore diameter		Outer diameter		Length		Flange diameter					K	H		PCD	Mounting hole	C N	C <sub>0</sub> N
		dr	Tolerance	D	Tolerance	L	Tolerance	D <sub>1</sub>	Tolerance										
LMK 6	4	6	0 -0.009	12	0	19	0 -0.2	28	0 -0.2	22	5	20	3.4×6.5×3.3	12	12	-5	206	265	17
LMK 8S	4	8		15		17		32		25	5	24	3.4×6.5×3.3	12	12	-5	176	225	25
LMK 8	4	8		15	24	32		25		5	24	3.4×6.5×3.3	12	12	-5	265	402	26	
LMK 10	4	10		19	29	39		30		6	29	4.5×8×4.4	12	12	-5	373	549	45	
LMK 12	4	12		21	30	42		32		6	32	4.5×8×4.4	12	12	-5	412	598	50	
LMK 13	4	13		23	32	43		34		6	33	4.5×8×4.4	12	12	-7	510	775	67	
LMK 16	5	16		28	37	48		37		6	38	4.5×8×4.4	12	12	-7	775	1180	105	
LMK 20	5	20		32	42	54		42		8	43	5.5×9.2×5.4	15	15	-9	863	1370	130	
LMK 25	6	25		40	59	62		50		8	51	5.5×9.2×5.4	15	15	-9	980	1570	270	
LMK 30	6	30		45	64	74		58		10	60	6.6×11×6.5	15	15	-9	1570	2750	344	
LMK 35	6	35	52	70	82	64	10	67	6.6×11×6.5	20	20	-13	1670	3140	487				
LMK 40	6	40	60	80	96	75	13	78	9×14×8.6	20	20	-13	2160	4020	790				
LMK 50	6	50	80	100	116	92	13	98	9×14×8.6	20	20	-13	3820	7940	1705				
LMK 60	6	60	90	110	134	106	18	112	11×17.5×10.8	25	25	-13	4710	10000	2278				

Note) Since this model contains a synthetic resin retainer, do not use it at temperature exceeding 80°C.  
If requiring a type equipped with a seal, indicate it when placing an order.

Note) If an oil hole is required, this can be indicated by appending "OH" to the end of the model number.  
For further information, contact THK.

(Example) LMK13 UU  
 Seal attached on both ends of the nut