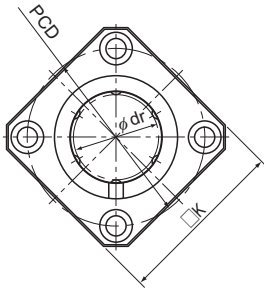
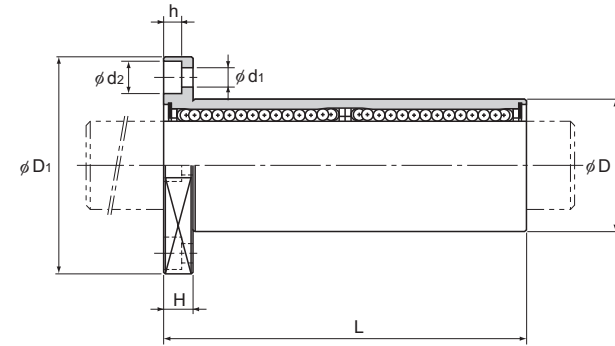


## Model LMK-L



Model LMK-L



Unit: mm

Model No.	Ball rows	Main dimensions								Flange perpendicularity	Eccentricity (max)	Radial clearance tolerance	Basic load rating		Mass				
		Inscribed bore diameter		Outer diameter		Length		Flange diameter					C	C <sub>0</sub>					
		dr	Tolerance	D	Tolerance	L	Tolerance	D <sub>1</sub>	Tolerance										
Standard type										μm	μm	μm	N	N	g				
LMK 6L	4	6	0 -0.010	12	0	35	0 -0.3	28	0 -0.2	22	5	20	3.4×6.5×3.3	15	15	-5	324	529	24
LMK 8L	4	8		15	-0.013	45		32		25	5	24	3.4×6.5×3.3	15	15	-5	431	784	39
LMK 10L	4	10		19	55	39		30		6	29	4.5×8×4.4	15	15	-5	588	1100	68	
LMK 12L	4	12		21	0	57		42		32	6	32	4.5×8×4.4	15	15	-5	657	1200	76
LMK 13L	4	13	23	-0.016	61	43	34	6	33	4.5×8×4.4	15	15	-7	814	1570	100			
LMK 16L	5	16	28	70	48	37	6	38	4.5×8×4.4	15	15	-7	1230	2350	176				
LMK 20L	5	20	32	80	54	42	8	43	5.5×9.2×5.4	20	20	-9	1400	2750	210				
LMK 25L	6	25	40	-0.019	112	62	50	8	51	5.5×9.2×5.4	20	20	-9	1560	3140	466			
LMK 30L	6	30	45	123	74	58	10	60	6.6×11×6.5	20	20	-9	2490	5490	569				
LMK 35L	6	35	52	0	135	82	64	10	67	6.6×11×6.5	25	25	-13	2650	6270	825			
LMK 40L	6	40	60	0	154	96	75	13	78	9×14×8.6	25	25	-13	3430	8040	1321			
LMK 50L	6	50	80	-0.022	192	116	92	13	98	9×14×8.6	25	25	-13	6080	15900	2952			
LMK 60L	6	60	0 -0.020	90	0 -0.025	211	134	106	18	112	11×17.5×10.8	25	25	-13	7650	20000	3883		

Note) Since this model contains a synthetic resin retainer, do not use it at temperature exceeding 80°C.

If requiring a type equipped with a seal, indicate it when placing an order.

(Example) LMK50L UU

Seal attached on both ends of the nut

Note) If an oil hole is required, this can be indicated by appending "OH" to the end of the model number.

For further information, contact THK.