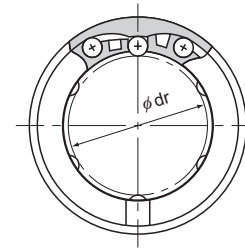
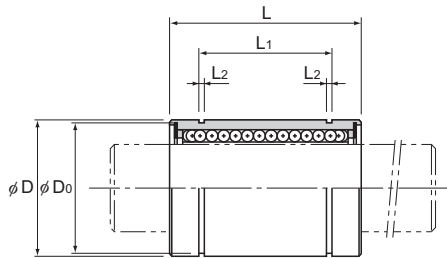
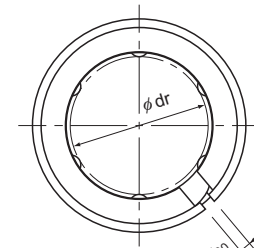


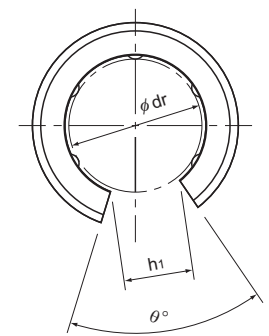
Model LME



Model LME



Model LME-AJ



Model LME-OP

Unit: mm

Model No.			Ball rows	Main						dimensions							Eccentricity (max) μm	Radial clearance tolerance μm	Basic load rating		
Standard type	Clearance-adjustable type	Open type		Inscribed bore diameter		Outer diameter		Length		L_1	Tolerance	L_2	D_0	h_0	h_1	θ°			C N	C_0 N	Mass g
				dr	Tolerance	D	Tolerance	L	Tolerance												
LME 5	LME 5-AJ	—	4	5	+0.008 0	12	0	22	0	-0.2	14.5	1.1	11.5	1	—	—	12	-5	206	265	11.4
LME 8	LME 8-AJ	—	4	8		16	-0.008	25			16.5								1.1	15.2	1
LME 12	LME 12-AJ	—	4	12	+0.009 -0.001	22	0	32	0	-0.2	22.9	1.3	21	1.5	7.5	78	12	-7	510	775	37
LME 16	LME 16-AJ	LME 16-OP	5	16		26	-0.009	36			24.9								1.6	30.3	2
LME 20	LME 20-AJ	LME 20-OP	5	20	+0.011 -0.001	32	0	45	0	-0.3	31.5	1.85	37.5	2	12.5	60	15	-9	980	1570	203
LME 25	LME 25-AJ	LME 25-OP	6	25		40	-0.011	58			44.1								2.15	59	3
LME 30	LME 30-AJ	LME 30-OP	6	30	+0.013 -0.002	47	0	68	0	-0.3	52.1	2.65	72	3	21	50	17	-13	1570	2750	306
LME 40	LME 40-AJ	LME 40-OP	6	40		62	-0.013	80			60.6								3.15	86.5	3
LME 50	LME 50-AJ	LME 50-OP	6	50	+0.016 -0.004	75	-0.013	100	0	-0.4	77.6	4.15	116	3	36.3	54	20	-16	3820	7940	1025
LME 60	LME 60-AJ	LME 60-OP	6	60		90	0	125			101.7								3.15	86.5	3
LME 80GA	LME 80GA-AJ	LME 80GA-OP	6	80	+0.016 -0.004	120	-0.015	165	0	-0.4	133.7	4.15	116	3	36.3	54	20	-16	7350	16000	4800

Note) Since Linear Bushing models LME60 or smaller models are incorporated with a synthetic resin retainer, do not use them at temperature exceeding 80°C.
If the ambient temperature exceeds 80°C, use the type equipped with a metal retainer and indicate "A" at the end of the model number.

(Example) LME20G A

High temperature symbol

If requiring a type equipped with a seal, indicate it when placing an order. (seal heat resistance: 80°C.)

(Example) LME16 UU

Seal attached on both ends of the nut

For the clearance-adjustable type (-AJ) and open type (-OP), the inscribed bore diameter tolerance, the outer diameter tolerance, and the eccentricity indicate the values before the division of the nut.

Note) If a metal retainer is used, the Linear Bushing has the shape as shown below.
When using the Linear Bushing on a single shaft, use two or more units (instead of one unit) on the same shaft to avoid a moment load, and secure a large distance between the units.
If an oil hole is required, this can be indicated by appending "OH" to the end of the model number.
For further information, contact THK.



Model LME-GA