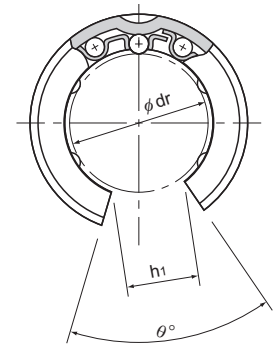
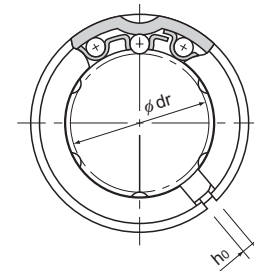
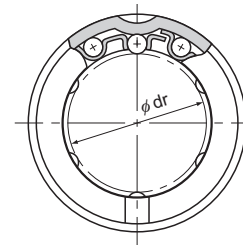
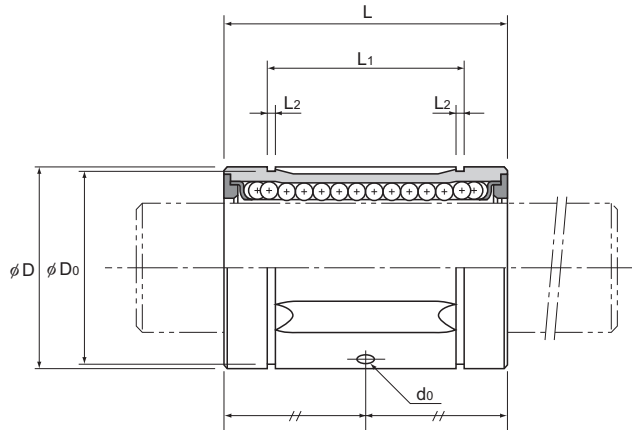


Model LM-GA (Metal Retainer Type)



Model LM-GA

Model LM-GA-AJ

Model LM-GA-OP

Unit: mm

Model No.			Ball rows	Main						dimensions							Greasing hole	Eccentricity (max) μm		Radial clearance tolerance μm	Basic load rating		Mass g						
Standard type	Clearance-adjustable type	Open type		Inscribed bore diameter		Outer diameter		Length		L ₁	Tolerance	L ₂	D ₀	h ₀	h ₁	θ°		d ₀	High		Precision	C		C ₀					
				dr	Tolerance	D	Tolerance	L	Tolerance																				
LM 6GA	—	—	3	6	0 -0.009	0 -0.006	12	0	19	0 -0.2	13.5	1.1	11.5	—	—	—	—	12	8	-5	206	265	7						
LM 8SGA	—	—	3	8			15	-0.011	17		11.5							12	8	-5	176	225	10						
LM 8GA	—	—	3	8			15	—	24		17.5							12	8	-5	265	402	14						
LM 10GA	—	—	4	10			19	—	29		22							12	8	-5	373	549	27						
LM 12GA	LM 12GA-AJ	LM 12GA-OP	4	12			21	0	30		23							1.3	20	1.5	7.5	80	2	12	8	-5	412	598	31
LM 13GA	LM 13GA-AJ	LM 13GA-OP	4	13			23	-0.013	32		23							1.3	22	1.5	9	80	2	12	8	-7	510	775	41
LM 16GA	LM 16GA-AJ	LM 16GA-OP	4	16			28	—	37		26.5							1.6	27	1.5	11	60	2.3	12	8	-7	775	1180	69
LM 20GA	LM 20GA-AJ	LM 20GA-OP	5	20			32	0	42		30.5							1.6	30.5	2	11	60	2.3	15	10	-9	863	1370	92
LM 25GA	LM 25GA-AJ	LM 25GA-OP	5	25			40	-0.010	59		41							1.85	38	2	13	60	3	15	10	-9	980	1570	200
LM 30GA	LM 30GA-AJ	LM 30GA-OP	6	30			45	-0.016	64		44.5							1.85	43	2.5	15	50	3	15	10	-9	1570	2750	250
LM 35GA	LM 35GA-AJ	LM 35GA-OP	6	35			52	0	70		49.5							2.1	49	2.5	17	50	3	20	12	-13	1670	3140	370
LM 38GA	LM 38GA-AJ	LM 38GA-OP	6	38			57	-0.019	76		58.5							2.1	54.5	3	18	50	3	20	12	-13	2160	4020	490
LM 40GA	LM 40GA-AJ	LM 40GA-OP	6	40	60	-0.012	80	60.5	2.1	57	3	20	50	3	20	12	-13	2160	4020	590									
LM 50GA	LM 50GA-AJ	LM 50GA-OP	6	50	80	0	100	74	2.6	76.5	3	25	50	4	20	12	-13	3820	7940	1500									
LM 60GA	LM 60GA-AJ	LM 60GA-OP	6	60	90	0	110	85	3.15	86.5	3	30	50	4	25	17	-16	4710	10000	1850									
LM 80GA	LM 80GA-AJ	LM 80GA-OP	6	80	120	-0.015	140	105.5	4.15	116	3	40	50	4	25	17	-16	7350	16000	4200									
LM 100GA	LM 100GA-AJ	LM 100GA-OP	6	100	150	0	175	125.5	4.15	145	3	50	50	4	30	20	-20	14100	34800	8200									
LM 120A	LM 120A-AJ	LM 120A-OP	8	120	180	-0.020	200	158.6	4.15	175	4	85	80	5	30	20	-25	16400	40000	15500									

Note) If requiring a type equipped with a seal, indicate it when placing an order. (seal heat resistance: 80°C.)

(Example) LM50GA UU

Seal attached on both ends of the nut

For the clearance-adjustable type (-AJ) and open type (-OP), the inscribed bore diameter tolerance, the outer diameter tolerance, and the eccentricity indicate the values before the division of the nut.

Note) When using the Linear Bushing on a single shaft, use two or more bushings on the same shaft to minimize a moment load, and secure a large distance between the units.

Model LM-GA has oil holes as a standard feature.

If an oil hole is required, this can be indicated by appending "OH" to the end of the model number.

For further information, contact THK.