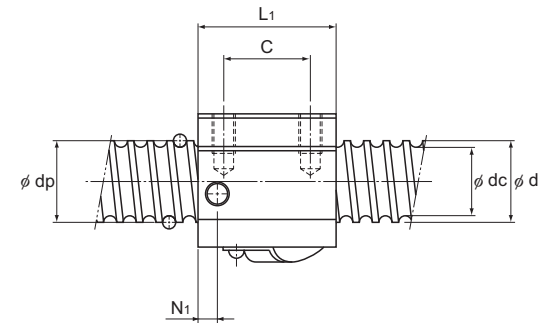
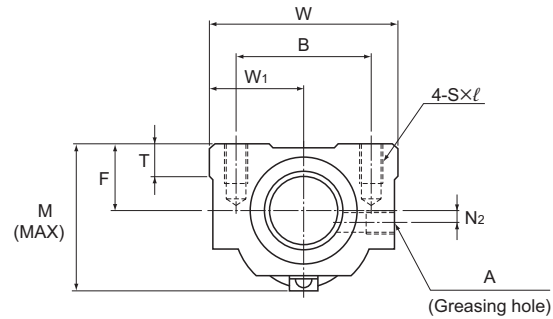


## BNT (Precision Ball Screw) No Preload

DN value	70000
----------	-------



Unit: mm

Model No.	Screw shaft outer diameter d	Lead Ph	Ball center-to-center diameter dp	Thread minor diameter dc	No. of loaded circuits Rows X turns	Basic load rating		Rigidity K N/μm	Nut dimensions											Screw shaft inertial moment/mm kg-cm <sup>2</sup> /mm	Nut mass kg	Shaft mass kg/m	
						Ca kN	C.a kN		Outer diameter D	Center height F	Overall length L <sub>1</sub>	Mounting hole			W <sub>1</sub>	T	M	N <sub>1</sub>	N <sub>2</sub>				Greasing hole A
												B	C	S X ℓ									
BNT 1404-3.6	14	4	14.4	11.5	1 X 3.65	6.8	12.6	190	34	13	35	26	22	M4 X 7	17	6	30	6	2	M6	2.96 X 10 <sup>-4</sup>	0.15	0.93
BNT 1405-2.6	14	5	14.5	11.2	1 X 2.65	7.2	12.6	150	34	13	35	26	22	M4 X 7	17	6	31	6	2	M6	2.96 X 10 <sup>-4</sup>	0.15	0.92
BNT 1605-2.6	16	5	16.75	13.5	1 X 2.65	7.8	14.7	170	42	16	36	32	22	M5 X 8	21	21.5	32.5	6	2	M6	5.05 X 10 <sup>-4</sup>	0.3	1.24
BNT 1808-3.6	18	8	19.3	14.4	1 X 3.65	18.2	34.4	270	48	17	56	35	35	M6 X 10	24	10	44	8	3	M6	8.09 X 10 <sup>-4</sup>	0.47	1.46
BNT 2005-2.6	20	5	20.5	17.2	1 X 2.65	8.7	18.3	200	48	17	35	35	22	M6 X 10	24	9	39	5	3	M6	1.23 X 10 <sup>-3</sup>	0.28	2.06
BNT 2010-2.6	20	10	21.25	16.4	1 X 2.65	14.7	27.8	220	48	18	58	35	35	M6 X 10	24	9	46	10	2	M6	1.23 X 10 <sup>-3</sup>	0.5	1.99
BNT 2505-2.6	25	5	25.5	22.2	1 X 2.65	9.6	23	240	60	20	35	40	22	M8 X 12	30	9.5	45	7	5	M6	3.01 X 10 <sup>-3</sup>	0.41	3.35
BNT 2510-5.3	25	10	26.8	20.2	2 X 2.65	43.4	92.8	520	60	23	94	40	60	M8 X 12	30	10	55	10	—	M6	3.01 X 10 <sup>-3</sup>	1.18	2.79
BNT 2806-2.6	28	6	28.5	25.2	1 X 2.65	10.1	25.8	270	60	22	42	40	18	M8 X 12	30	10	50	8	—	M6	4.74 X 10 <sup>-3</sup>	0.81	4.42
BNT 2806-5.3	28	6	28.5	25.2	2 X 2.65	18.3	51.6	510	60	22	67	40	40	M8 X 12	30	10	50	8	—	M6	4.74 X 10 <sup>-3</sup>	0.78	4.42
BNT 3210-2.6	32	10	33.75	27.2	1 X 2.65	27.3	59.5	330	70	26	64	50	45	M8 X 12	35	12	62	10	—	M6	8.08 X 10 <sup>-3</sup>	1.3	4.98
BNT 3210-5.3	32	10	33.75	27.2	2 X 2.65	49.6	118.9	640	70	26	94	50	60	M8 X 12	35	12	62	10	—	M6	8.08 X 10 <sup>-3</sup>	2	4.98
BNT 3610-2.6	36	10	37	30.5	1 X 2.65	28.7	65.6	360	86	29	64	60	45	M10 X 16	43	17	67	11	—	M6	1.29 X 10 <sup>-2</sup>	1.8	6.54
BNT 3610-5.3	36	10	37	30.5	2 X 2.65	52.1	131.2	700	86	29	96	60	60	M10 X 16	43	17	67	11	—	M6	1.29 X 10 <sup>-2</sup>	2.4	6.54
BNT 4512-5.3	45	12	46.5	39.2	2 X 2.65	68.1	186.7	860	100	36	115	75	75	M12 X 20	50	20.5	80	13	—	M6	3.16 X 10 <sup>-2</sup>	4.1	10.56

Note) The overall length of the nut will increase when equipping the QZ lubricating device. See [15-344](#) for further details.  
For model number coding, see [15-230](#).